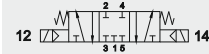


1/2 - 5/3 monostable
1/2 - 5/3 monostable
1/2 - 5/3 monostabile

CODE: VY26ELMCC

closed centres
centre fermé
centri chiusi



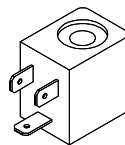
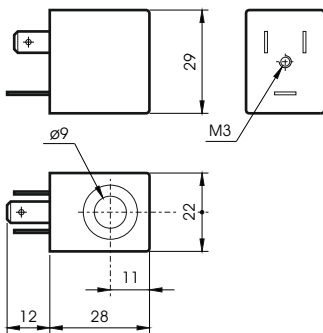
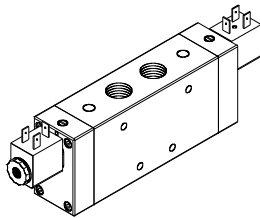
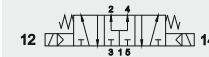
CODE: VY26ELMCA

open centres
centre ouvert
centri aperti



CODE: VY26ELMCP

press. centres
centre en pression
centri in pressione



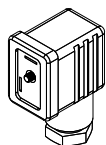
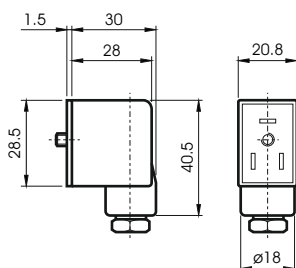
COILS
BOBINE
BOBINE

Power / Absorption / Assorbimento

CODE	Tension Tensione	Rated regime a regime	Inrush de sortie di spunto
BO4011024	24 VDC	3W	
BO4012024	24 VAC	5VA	7,5VA
BO4012110	110 VAC	5VA	7,5VA
BO4012220	220 VAC	5VA	7,5VA

CARATTERISTICHE TECNICHE / TECHNICAL SPECIFICATIONS / CARACTERISTIQUES TECHNIQUES

Tension tolerance / Tolerance / Tolleranza di tensione	+10%
Protection with connector/Protection avec connecteur/Protezione con connettore	IP65
Max working temp. / Temperature max d'utilisation / Temp. max di esercizio	+50 C°
Duty cycle / Temps d'enclenchement / Inserimento	ED 100%



CONNECTORS
CONNECTEUR
CONNETTORI

CODE	
AR40696	STANDARD
VX0014	LED 24V
VX0015	LED 110V
VX0016	LED 220V
VX0017	LED+VDR 24V
VX0018	LED+VDR 110V
VX0019	LED+VDR 220V